

**D**etroit **S**cots



**Z**



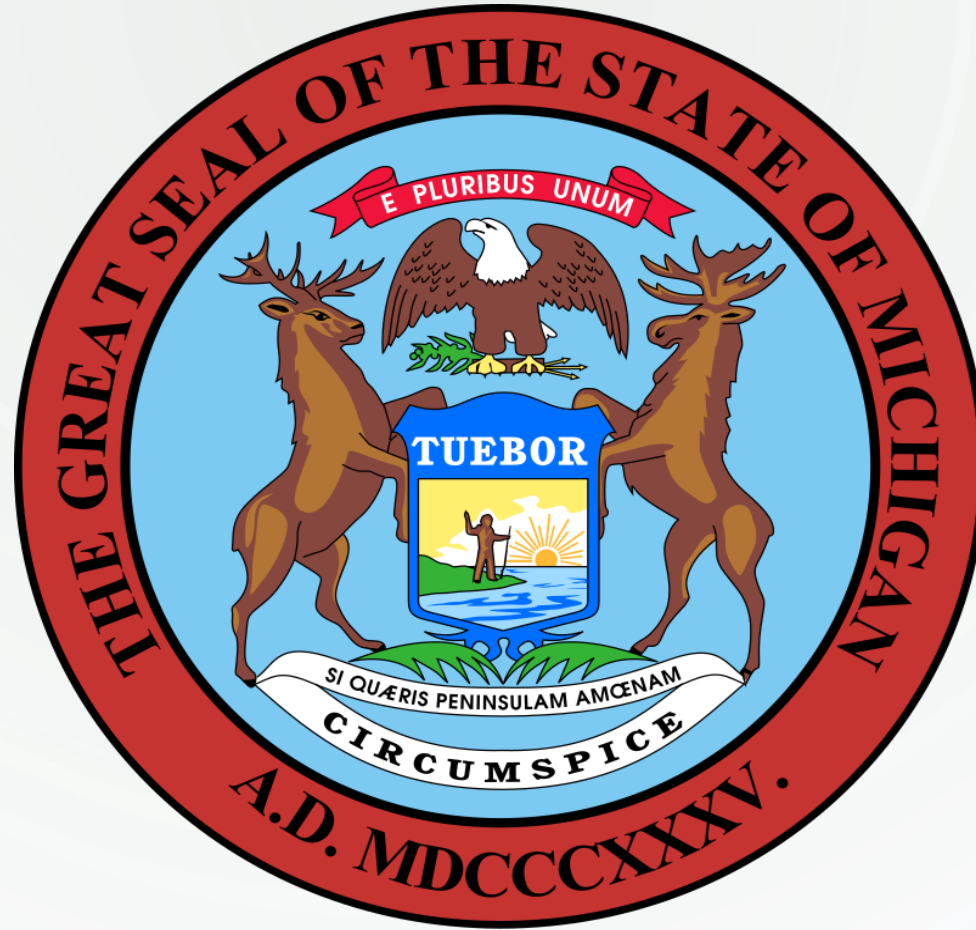
**M**

—ST. ANDREW'S SOCIETY OF DETROIT—

## Trivia Questions

# Michigan History and Geography

There may be a test.....



1. How long is the Firth of Mackinac Bridge  
(Measured between the towers)?

- A. 5 miles
- B. 3,800 feet
- C. 5,280 feet
- D.  $\frac{1}{2}$  way
- E. 3,280 feet



## B. 3,800 feet

- Completed in 1957, it is the 5<sup>th</sup> longest suspension bridge in the world, with a total length of 5 miles. Tower to tower is the usual length measure of suspension bridges, it is 24<sup>th</sup> longest suspension bridge in the world, and the 3<sup>rd</sup> longest suspension bridge in North America. With its long side spans it remains the 5<sup>th</sup> longest in suspended length; and the longest in the western hemisphere measuring 7,400 ft from pier to pier.

2. A county was named for Alexander Macomb, of Scots-Irish descent. For what was he famous?

A. Sang with the Clancy Bros & Tommy Macomb

B. Invented Mac-omm, Scottish yoga

C. Was an early automotive engineer

D. Beat the Bloody British in 1814

E. Founded the Mt. Clemens baths



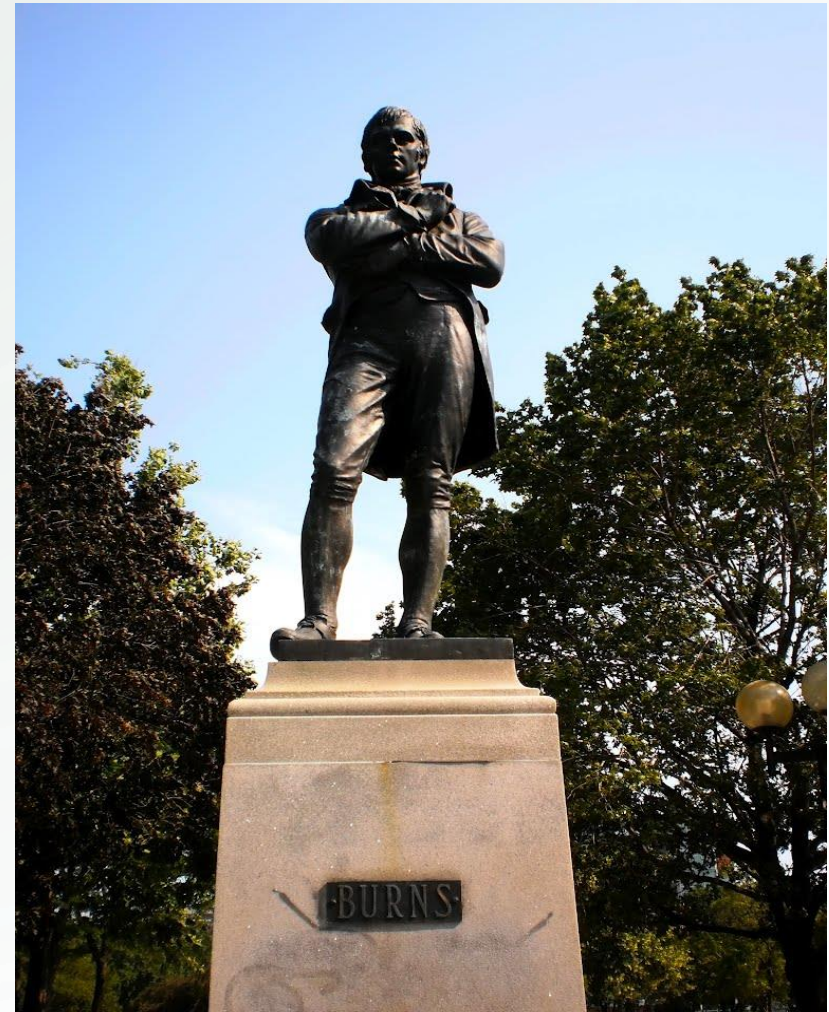
## D. He was the “Hero of Plattsburgh”, N.Y.



In the War of 1812, with only 1,500 regular troops and some detachments of militia, he defeated a British force of 10,531. Macomb was promoted Major General, then Commanding General of the Army in 1828. He also painted “Detroit as Seen from the Canadian Shore in 1821,” now at the DIA. Detroit-born in 1782, he was the son of a business-man/landowner

3. Where in Michigan is the Robert Burns Statue?

- A. Burns Park, Ann Arbor
- B. By Scot Fountain, Belle Isle
- C. Cass Park, Detroit
- D. Kilgour Center, Troy
- E. Sweet Afton Park, River Rouge





THE BURNS STATUE, CASS PARK, DETROIT  
Unveiled July 23rd, 1921



## C. Cass Park by Masonic Temple and Cass Tech HS, Detroit

- A bronze statue by George Anderson Lawson, it was originally erected in Ayr, Scotland in 1891, and moved to Cass Park in 1921, sponsored by the City of Detroit Burns Club and the ladies auxiliary, The Jean Amour Club.

Detroit Scots pay tribute

<https://www.youtube.com/watch?v=Ce8XADBQ9U4>

- Sir Harry Lauder pays tribute

<https://www.youtube.com/watch?v=AYohE0V-fIQ>

4. The Lower Peninsula's longest State Highways are both found in Battle Creek. Name both for 1 point each.

A. M-23

B. M-16

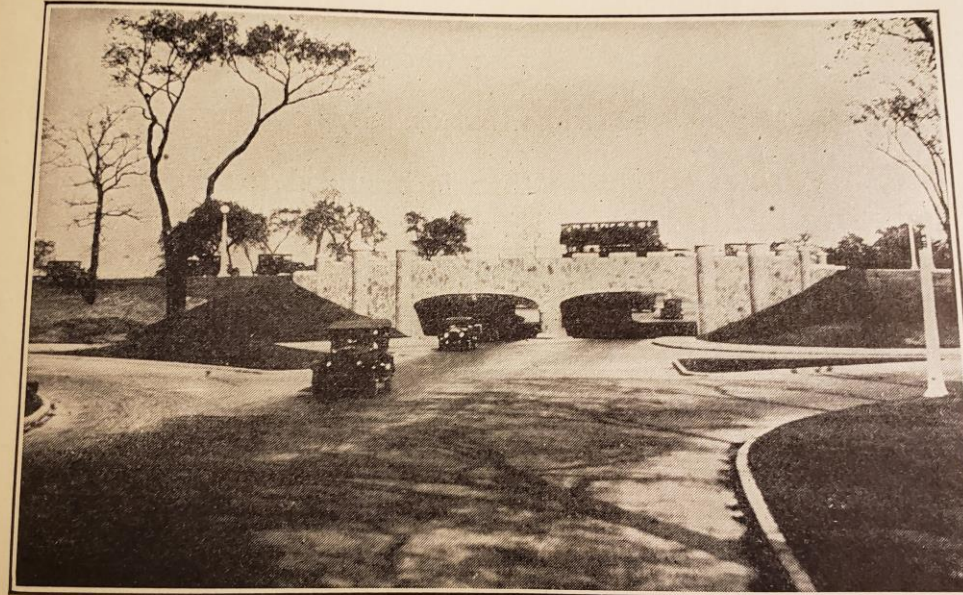
C. M-66

D. M-24

E. M-37

the street. Intersections of rural highways should be extended at the property corners for the same reason. Here

FIG. 16. Elevations at Curb Corners from Intersecting Grades.



*Courtesy of Portland Cement Association*

FIG. 17. Grade Separation at Highway Intersection.

## C. M-66 and E. M-37 (1 point for each correct answer)

- Both run thru Battle Creek but they do not intersect.
- M-66 is the longest highway in the Lower Peninsula, running 266 miles from the Indiana border at Sturgis to US 31 in Charlevoix.
- M-37, the second longest highway in Lower Michigan, runs from Battle Creek 221 miles to the tip of the Old Mission Peninsula north of Traverse City.
- The longest state highway is M-28 , The Trans-Upper Peninsula highway, it runs 290 miles from Sault Ste Marie to US 2 in Wakefield near the Wisconsin border.

5. What was Michigan's population in the 2010 census?

- A. 7,490,388
- B. 9,883,640
- C. 12,245,295
- D. 9,986,857
- E. 8,318,370



## B. 9,883,640

- The answer D. (9,986,857), was the population in 2019
- Growth is slow at 0.03%, compared to the US rate of 0.05%. and we may lose a Congressional seat after 2020 census numbers are compiled
- There were only 110,093 births in 2018, a decrease of 28.1% since 1990's 153,080 births
- Reminder: Robert Burns fathered 12 offspring by four different mothers.
- The Mean Center of Population is near Perry , in Shiawassee County

6. How many Michigan Counties are in the Central Time Zone?

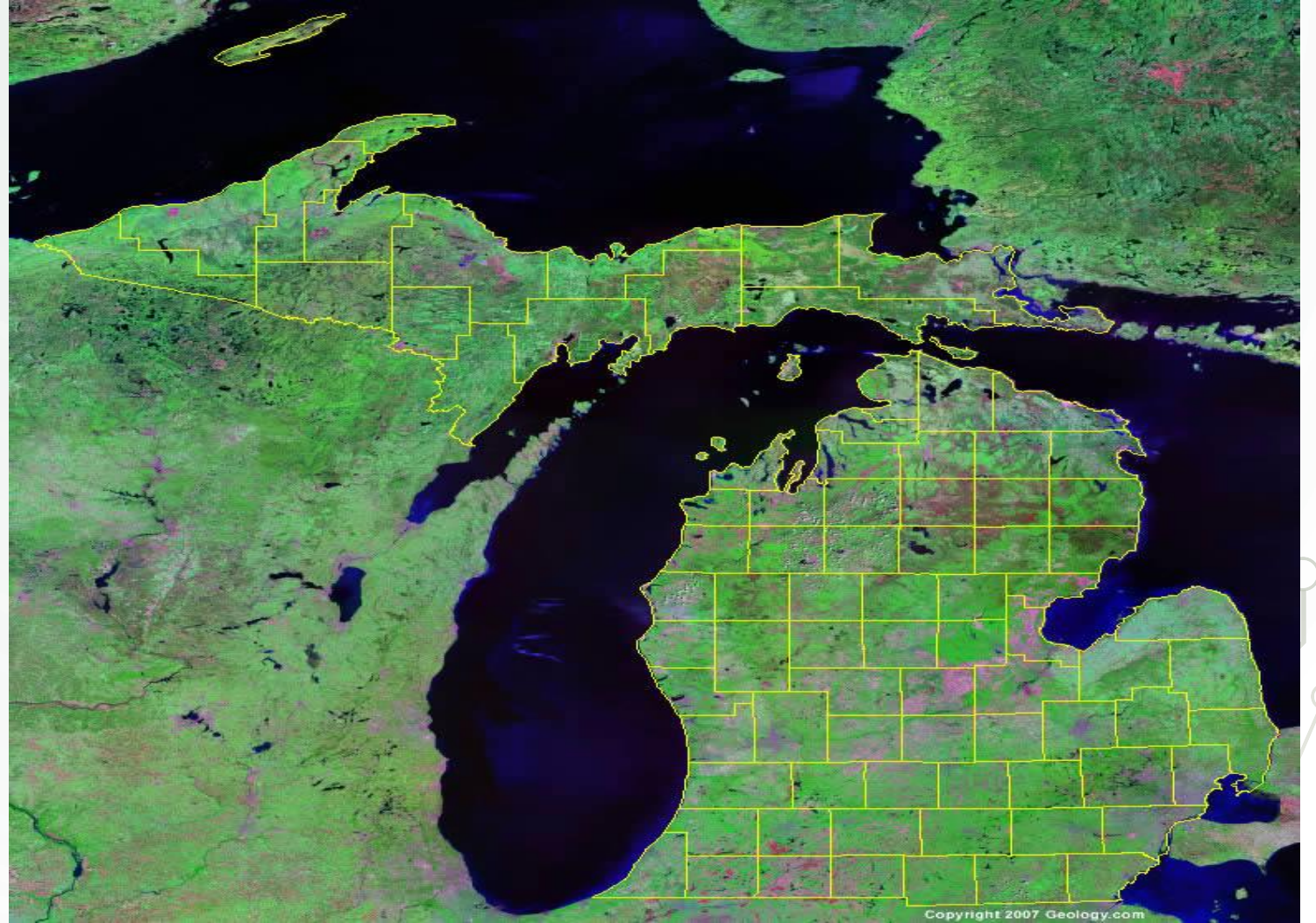
A. 1

B. 2

C. 3

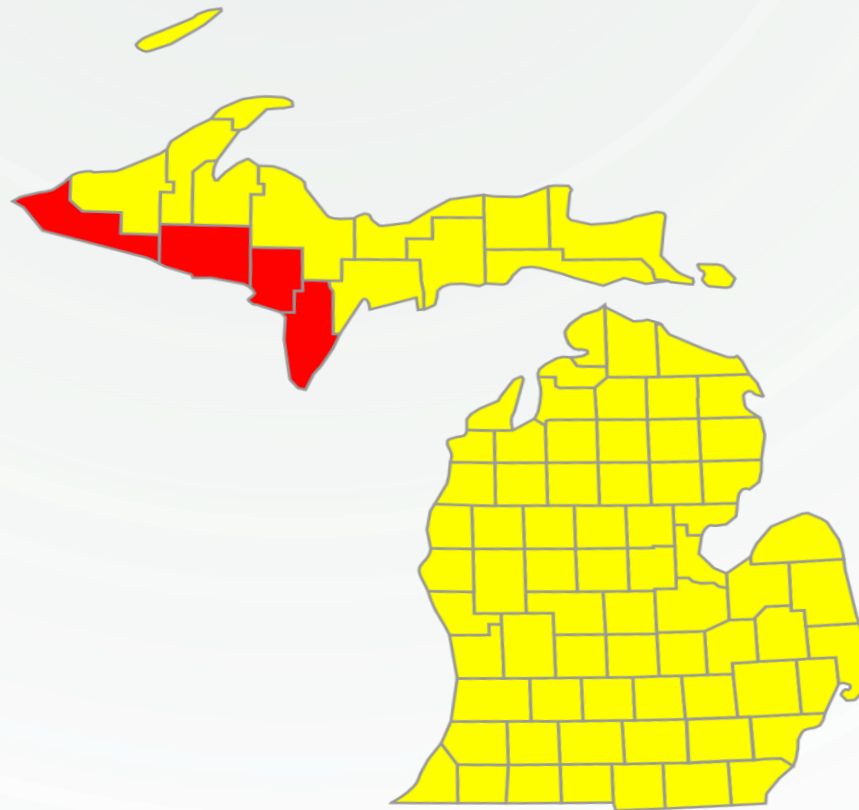
D. 4

E. 5



## D. 4

- In the western U.P., Gogebic, Iron, Dickinson and Menominee Counties are in the Central Time Zone



7. In what year did Michigan become a state?

A. 1912

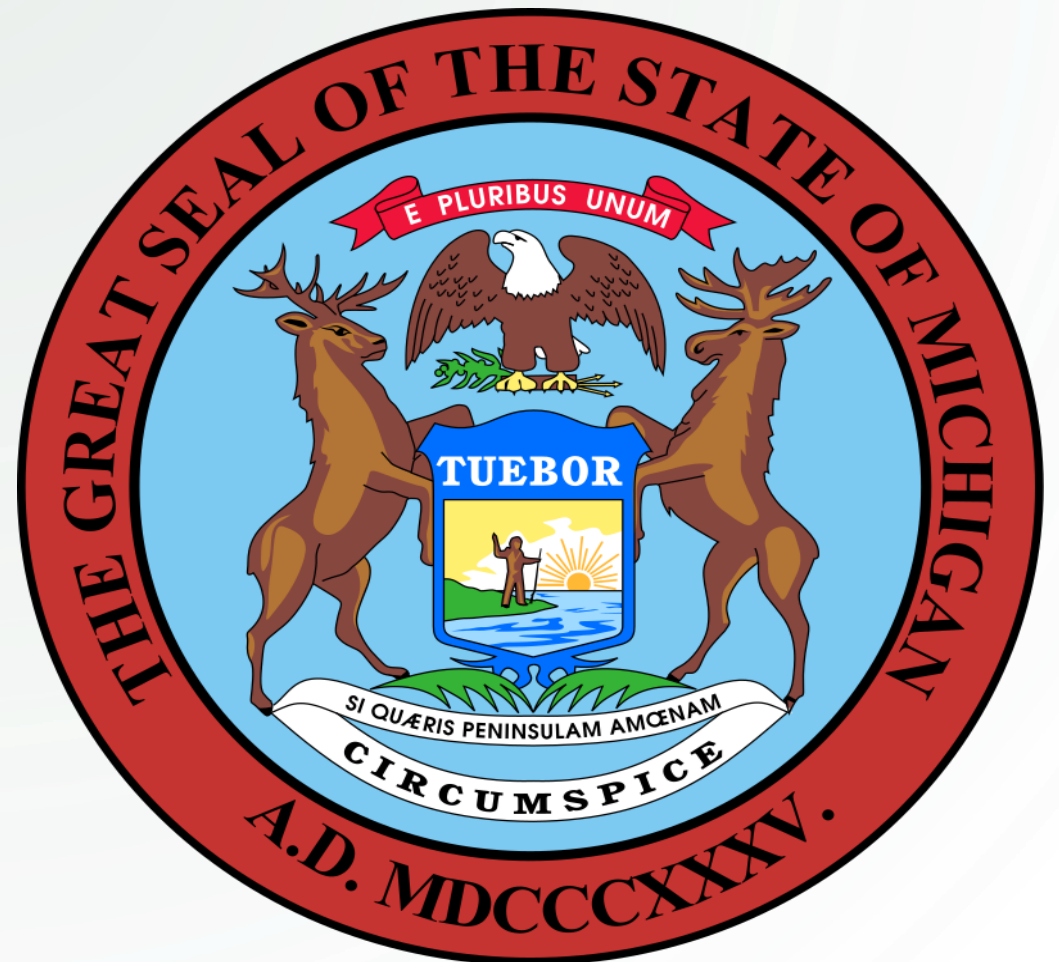
B. 1794

C. MDCCCXXXV

D. 1837

E. 18 aught-something

F. Never - it's a Commonwealth





## D.1837

- MDCCCXXXV on the Seal is 1835, the year *the Seal* was adopted
- From 1787 to 1800, it was part of the Northwest Territory
- In 1800, the Indiana Territory was created, and most of the current state Michigan lay within it
- In 1802, when Ohio became a state, the whole of Michigan was attached to the Territory of Indiana, and so remained until 1805, when the Territory of Michigan was established.
- **In 1837, Michigan was admitted to the Union**

8. What 4-legged mammals are on the Great Seal?  
1 point for each correct answer

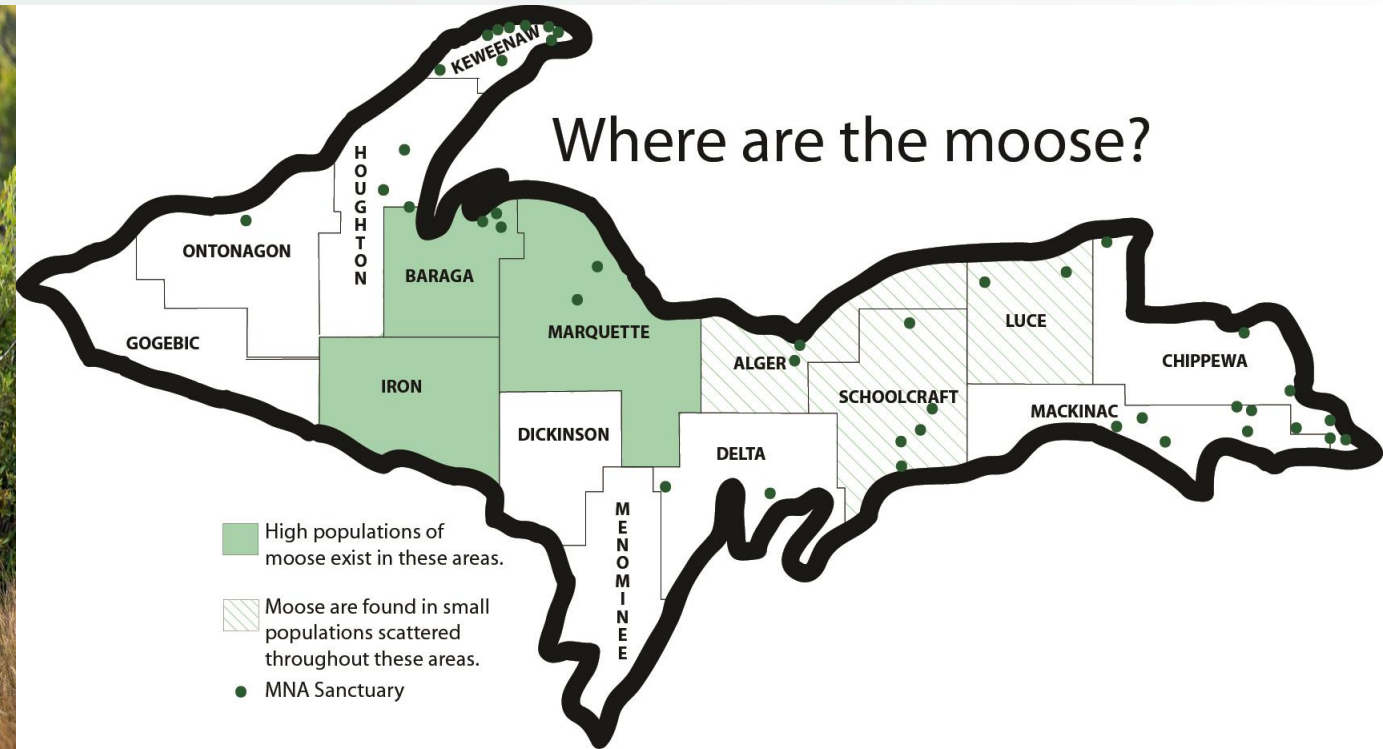
- A. Deer
- B. Beaver
- C. Elk
- D. Wolverine
- E. Haggis
- F. Moose



## C. Elk – 1,100 estimated in state



F. Moose – approx. 509 in the U.P. and 2,000 on Isle Royale, where population is up from 500 in 2011



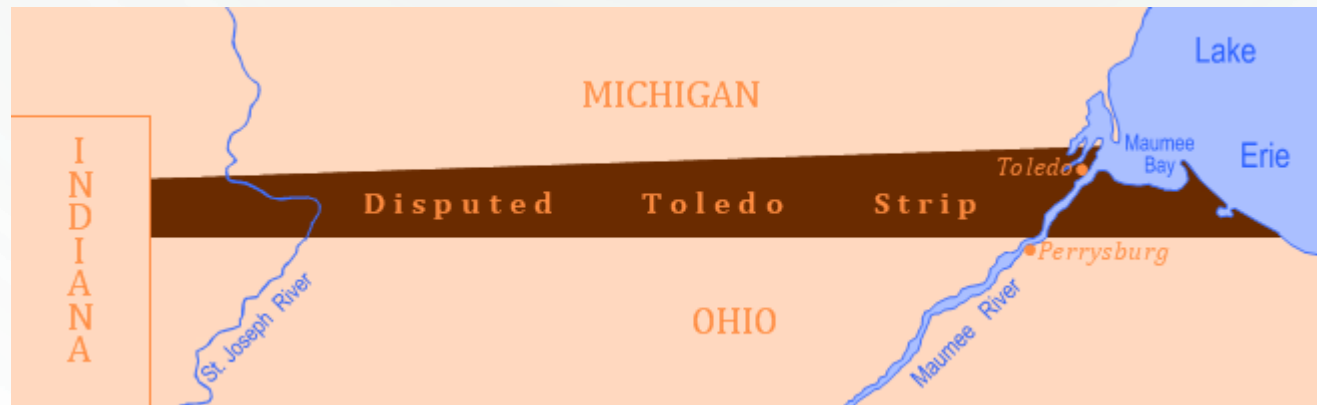
9. What did Michigan win in the Toledo war?

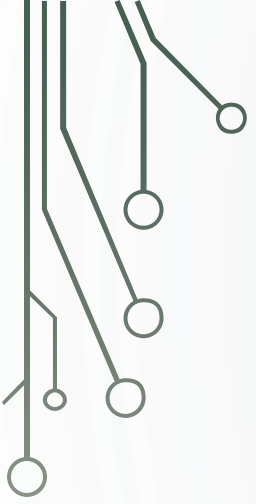
- A. Tony Packo's Restaurant
- B. The U.P.
- C. 3.2% beer
- D. Bragging rights
- E. A salt mine



## B. The U.P.

- In 1835-36, there was an almost bloodless ‘war’ over the disputed territory. The only casualty was a Michigan sheriff, stabbed with a pen knife by a boy named Two Stickney. Ohio got the strip, and Michigan got the mineral-rich western U.P. and all the Cornish pasties we could eat.





10. Who established the only kingdom in the continental U.S.?

A. Benjamin Purnell, House of David, Benton Harbor

B. King Friday, Rogers City

C. Emperor Jones , Jonesville

D. King Salmon, Lake Michigan

E. King Strang, Beaver Island



## E. King Strang, Beaver Island

- James Jesse Strang had appointed himself the head of a branch of the Church of Latter-Day Saints (Mormons) upon the death of its founder, Joseph Smith. Following a vision, he moved to Beaver Island and started a colony. A polygamist, he married 5 women. As if that was not enough punishment, he became a state legislator. In 1856 he was shot by disgruntled church members.





**Add up your scores!**

**Who has 12 points or correct?**

**Who has 11 correct?**

**10 correct?**

**9 or less?**



The background features a large, faint, light-colored circle in the center. Surrounding this circle are several concentric, slightly offset circles of the same color, creating a ripple effect. In the four corners, there are decorative elements consisting of thin, dark lines that branch out and end in small circles, resembling a circuit board or a network diagram.

**Tiebreaker!**

How many miles of shoreline does Michigan have?

A. 1,837

B. 2,798

C. 3,224

D. 4,636

E. 3,912



C. 3,224 miles

Michigan ranks 9<sup>th</sup> in  
coastline, with Alaska  
having 33,904 miles,  
followed by Florida  
with 8,436





## And the winners ARE:

- Claudia Scott
- Nancy Walters

The Winners receive a \$5 Gift Certificate to Panera!





—ST. ANDREW'S SOCIETY OF DETROIT—

## Trivia Questions

# Michigan History and Geography